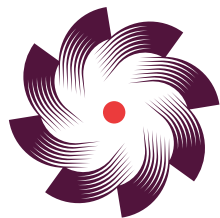


ekabel®



BENNU
VALVE

Optimization system
for oil well production

www.ekabel.net



What does it consist of?

Bennu Valve is an efficient technology that restores oil and gas production in wells that are no longer economically profitable (deposits are in a mature stage).

How it Works?

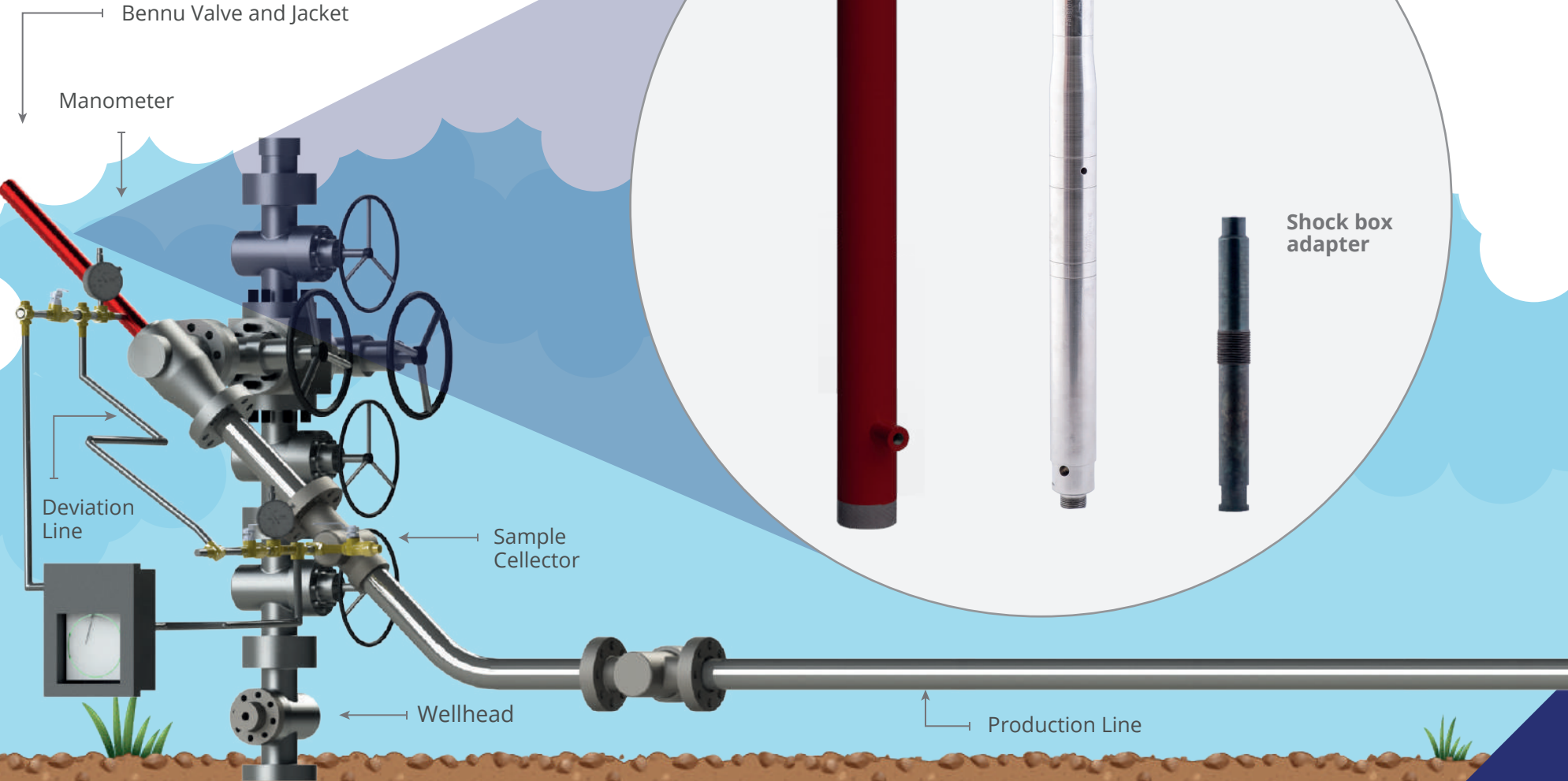
- The tool has **two pressure sensors** that control the alternate opening and closing of well production.
- The **high pressure sensor** allows the opening of the well when it has accumulated enough pressure to move the fluid plug to the surface.
- The **low pressure sensor** closes the well once the liquid plug has been produced, then the pressure is restored again.
- **The cycle is repeated.**



► Advantages & Benefits

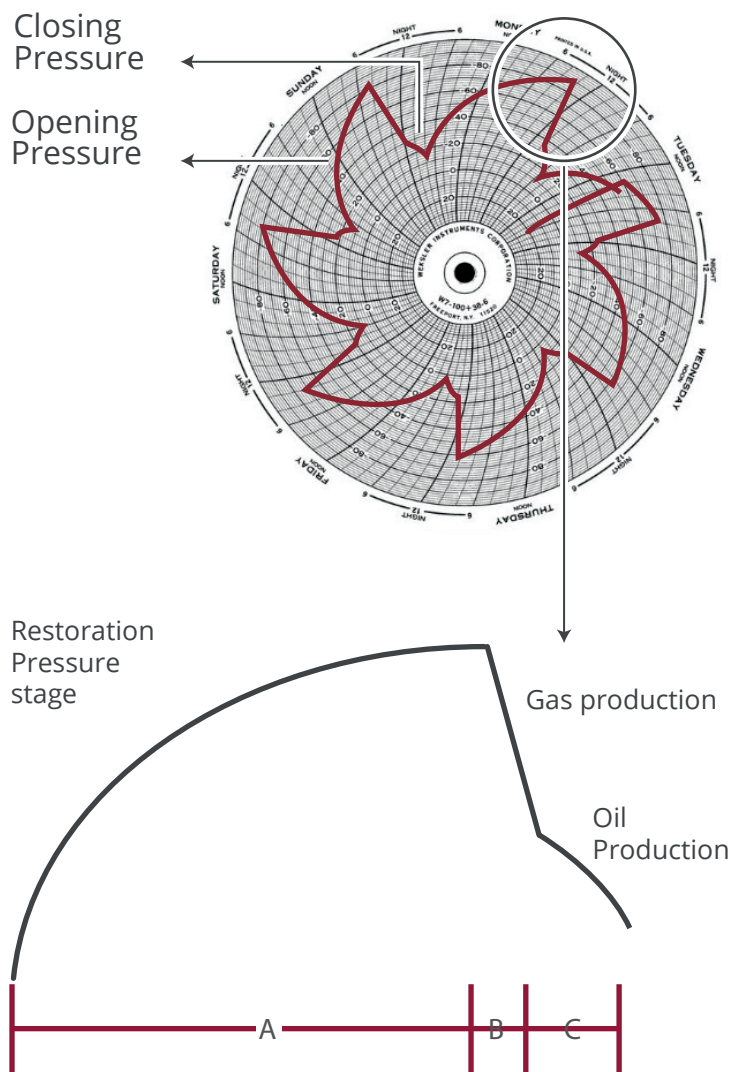
- **Immediate increase** in oil and gas production
- **Surface installation**, does not require intervention in the bottom of the well, the installation is done on the wellhead
- **Low maintenance**, decrease of workforce
- **100% autonomous**, operates only by pressure of the well
- **Does not require electrical power**
- **Resistant**, all parts are stainless steel
- **Easy reinstallation**, once a well ends its productive stage it can be utilized in another
- **Compatible with all types of wells**, there are no vertical limitations

► General Outline



► Successful business case

Barton Disk



Facts

Average Production:
19,6 BOPD / 358 MSCFD

Time:
8 months

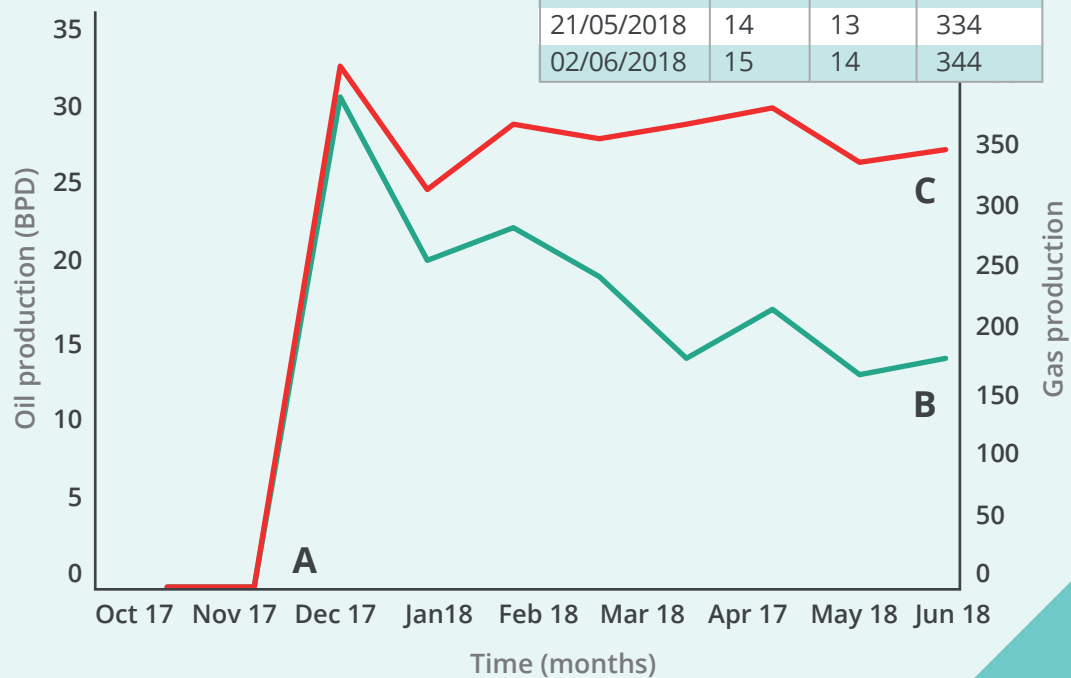
Real production records:
Well BE37-1 in Venezuela

Cumulative production of the term :
4060 BO / 85740 MPC

Production of well B37-1

BPD: Barrels per day
BOPD: Barrels of oil per day
SCFD: Standard cubic feet per day

FECHA	BNPD	BOPD	NCFD
03/10/2017	0	0	0
03/11/2017	0	0	0
04/11/2017	38	30	410
02/12/2017	25	20	313
02/01/2018	27	22	364
02/02/2018	24	19	352
02/03/2018	15	14	364
03/04/2018	19	17	377
21/05/2018	14	13	334
02/06/2018	15	14	344



► Operation

Bennu Valve automates the opening and closing process for intermittent production wells. This is accomplished by the action of a pair of mechanical devices that, when exposed to certain pressure levels, contract and allow the opening or closing of the well.

The tool is calibrated to a pressure such that when the well is opened, it is able to move a fluid plug to the surface and immediately after producing this plug, the well closes again.

► Installation Kit

- Mechanical protection (jacket)
- Shock Box adapter



Exploded view of the valve

SPECIFICATIONS

Power Source	Does not require a power source
Temperature range	Maximum 300 ° C
Time for installation	6 hours for initial installation / 30 minutes for recalibration
Construction material	Stainless steel
Other required elements	Initially requires a BARTON meter to verify reservoir behavior
Connections	Metal-metal connections
Soldering	The tool is manufactured with heat induction welding
Calibration element	Nitrogen
Installation point of the tool in the wellhead	Shock box

Bennu Valve



▶ Who are we?

A team of **professionals with vision of the future and action oriented.**

We are passionate about designing solutions that respond to the needs of customers.

▶ Where are we?

With offices in **Latin America, The United States, Australia & Spain**, Ekabel has consolidated its rapid expansion and has participated in numerous important projects.

▶ What do we do?

Based on expert knowledge, **we design and integrate energy systems, telecommunications and automation** to optimize results for our customers and protect their most value assets.



▶ 360° Integration

When it comes to energy systems and connectivity networks, we've got you covered. Our ability to **integrate several products in a single proposal** is the backbone of our service.

▶ Borderless Logistics

Streamlined delivery is part of our signature service in order to meet client needs.

▶ Knowledge Center

Our team of **top level engineers from around the world, with heavy expertise in the industries we serve**, provides our clients expert advice on the most challenging projects.

Global Service Team

We have dedicated experts exclusively to provide support for our customers.

Technology transfers

Specific training sessions on the latest topics.

▶ Flexibility

Our geographic expansion allows us to offer **competitive advantages on both small and large projects**.

Global reach with local support.



► **Contact us for further details
and acquisitions of Bennu Valve**

AUSTRALIA

📞 +61 (432)284994
✉ sales.au@ekabel.net

CHILE

📞 +56 954 89 62 95
✉ info@ekabel.net

COLOMBIA

📞 +57 (1) 432-2983
✉ comercial.co@ekabel.net

SPAIN

📞 +34 686041085
✉ info.spain@ekabel.net

UNITED STATE

📞 +1 (832) 437-5798
✉ sales@ekabel.net

MEXICO

📞 +52 (55) 6650-1509
✉ ventasmx@ekabel.net

PANAMA

📞 +507 310-0944
✉ ventas.pa@ekabel.net

PERU

📞 +51 (1) 399-3200
✉ ventaspe@ekabel.net

VENEZUELA

📞 +58 (212) 961-9512
✉ ventas@ekabel.net