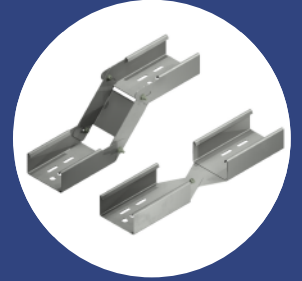


**Patented
push-pin technology**



**Lightweight
Material**



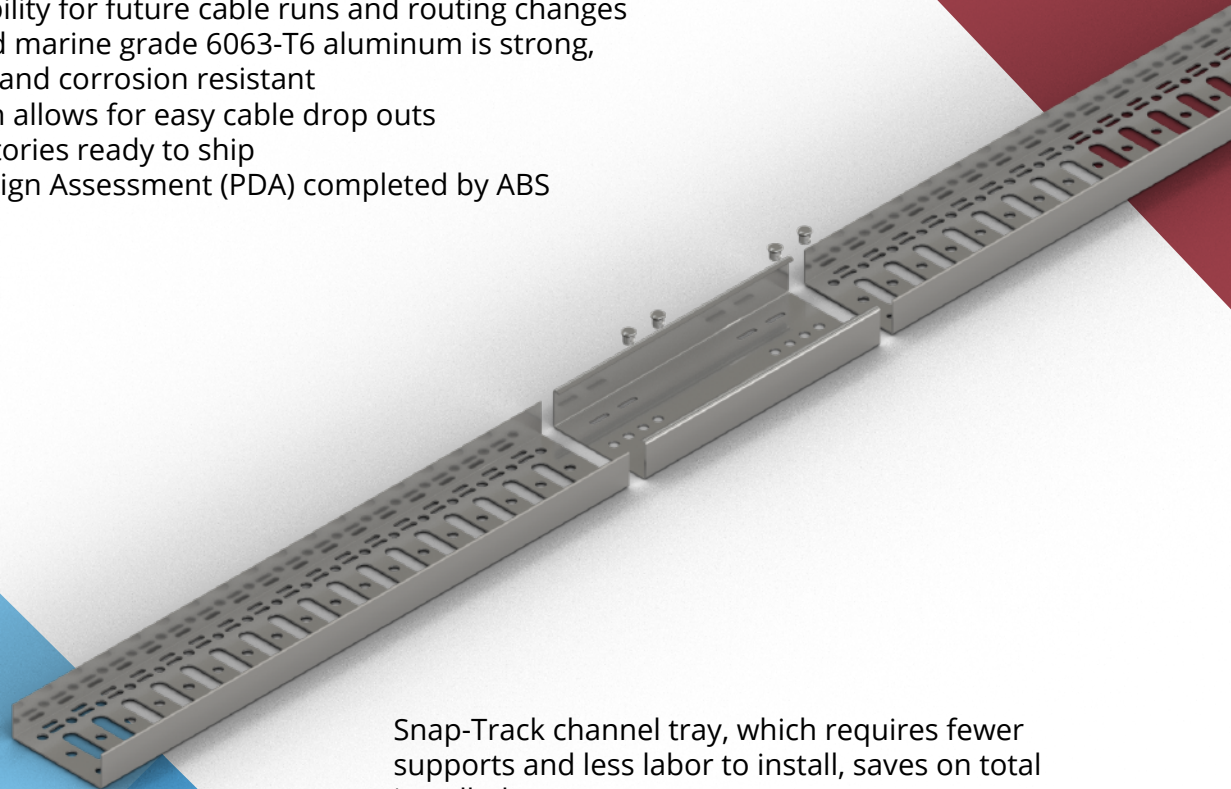
**Ventilated
System**

Snap-Track Channel Tray

**Fastest tray installation
No tools required**

Save on total installed costs with Snap Track V2 Ventilated Channel System

- Quick, easy installation, saves labor
- Unique patented push-pin assembly requires less time to install without using tools
- Longer span distances require fewer supports, increasing cost savings
- Large selection of fittings reduces field labor
- Allows flexibility for future cable runs and routing changes
- UL Classified marine grade 6063-T6 aluminum is strong, lightweight, and corrosion resistant
- Hole pattern allows for easy cable drop outs
- Large inventories ready to ship
- Product Design Assessment (PDA) completed by ABS



Snap-Track channel tray, which requires fewer supports and less labor to install, saves on total installed costs.

Snap-Track's innovative ventilated channel type cable tray, is a UL Classified product with patented push-pin assembly, and is an excellent choice for supporting electrical and instrumentation cabling, as well as tubing, in industrial facilities, data centers, mining operations, offshore operations, and other applications.

As a less-expensive alternative to conduit, a stronger alternative than wire basket, and superior to generic tray, Snap Track saves on labor and reduces total installed costs. Snap-Track Channel is available in 2", 4" and 6" widths.

Industries & Applications

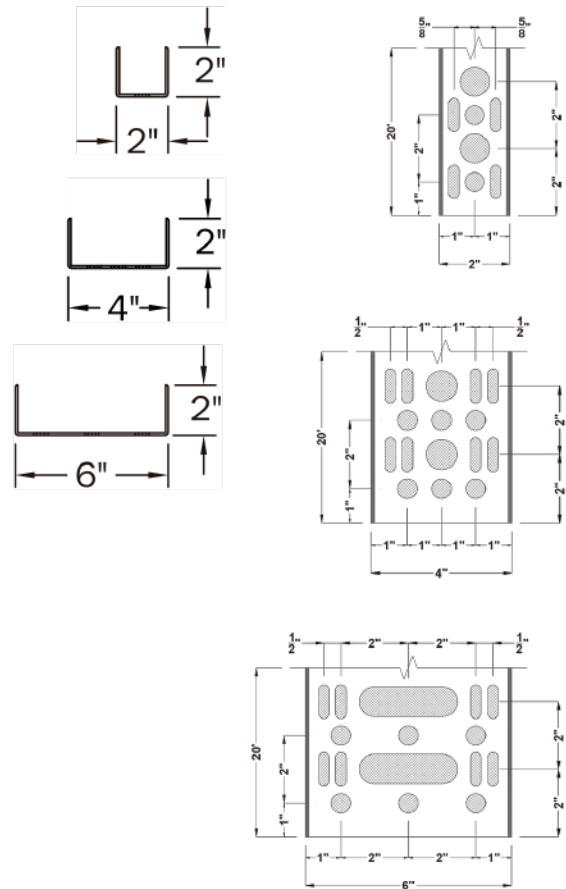
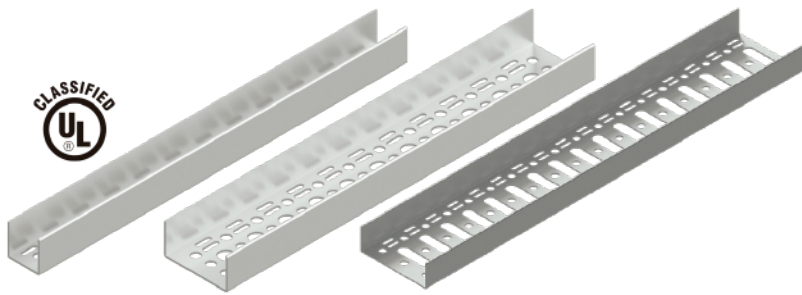
- Petroleum Refineries
- Chemical Processing
- Offshore and Marine
- Biofuel Facilities
- LNG Export Facilities
- Food and Beverage
- Power Generation
- Commercial Construction
- Renewable Energy
- Data management

Comparison Table

Feature	Conduit	Generic Tray	Snap-Track
Horizontal support	Every 8 - 10'	Every 8 - 10'*	Up to 18'*
Moisture-Related Failure	Somewhat Likely Moisture accumulation is a concern with any enclosed wiring system.	Not likely	Not likely
Flexibility: system adaptable to future modifications	Difficult: New wiring system can't be added. Separate conduit is routed to new equipment	Somewhat Difficult: Mechanically disconnected sections require labor-intensive removal and replacement of fittings.	Easy: simply add new cable to the tray, or if rerouting is needed, simply "unsnap" fittings and "snap" new ones. Large selection of fittings available
Labor cost saving: compared to conduit installation**	-	15% - 35%	36% - 48%

* According to NEMA

** It has been well documented that cable tray systems require fewer man hours to install than a conduit. However, labor rates and man-hour rates may vary by region and contractor. Familiarity with the installation of tray systems may also cause variations.



	MCSA *	W	D	L	
Cable Tray					
STC-2-2-AL-V2	0.40	2"	2"	20'	13 lbs
STC-4-2-AL-V2	0.60	4"	2"	20'	16 lbs
STC-6-2-AL-V2	0.60	6"	2"	20'	19 lbs

***MCSA** = Minimum Cross Sectional Square Inch Area
 Note: Aluminum Tray Thickness .100"

To assist in determining cable lengths and installation Snap-Track tray is marked every (1 meter) **UL Classified**.



The Snap-Track system has been tested and is classified by Underwriters Laboratories for both UL and Canadian UL (File number E249472)



Snap-Track offers numerous fittings and specialty splices to make the system easy to install. see techlinemfg.com for complete list.

Estados Unidos
 +1 (832) 437-5798
 sales@ekabel.net

Ecuador
 +59 396 901 1040
 atc.ec@ekabel.net

México
 +52 (55) 6650-1509
 ventasmx@ekabel.net

Colombia
 +57 1 432-2983
 comercial.co@ekabel.net

Perú
 +51 (1) 399-3200
 ventaspe@ekabel.net

Venezuela
 +58 (212) 961-9512
 ventas@ekabel.net

Australia
 +61 39523-2277
 sales.au@ekabel.net

Panamá
 +507 310-0944
 ventas.pa@ekabel.net

Chile
 +56 954 89 62 95
 info@ekabel.net

España
 +34 686-041-085
 info.spain@ekabel.net

www.ekabel.net

Aprobado por



Material desarrollado por

ekabel

TechLine MFG.
 Leader in Instrumentation & Electrical Supports